



# Preserving our Sacred Home

# FAQS

## 1. Why is Nativity BVM Cathedral launching a capital campaign?

After more than 30 years without major renovations, our Cathedral campus is facing significant facility needs that can no longer be delayed. The recent Feasibility Study confirmed that parishioners recognize these needs and support moving forward. This campaign will allow us to preserve our sacred spaces, strengthen our ministries, and ensure a vibrant Cathedral for future generations.

## 2. What is the vision behind the “Preserving Our Sacred Home” Campaign?

Our vision is to create sustainable, beautiful spaces that reflect the glory of God’s creation and support the spiritual growth of our parish family. These improvements will enhance our worship experience, expand our ability to serve the community, and strengthen our mission of evangelization and outreach.

## 3. How were the campaign priorities determined?

The priorities were shaped through the Feasibility Study, parish leadership discussions, and an assessment of the most urgent facility needs. The plan is organized into three phases to ensure responsible stewardship and long-term sustainability.

## 4. What are the campaign’s major priorities?

### Priority I – Immediate Parish Renovation Needs

Repairs to the Cathedral ceiling, Bell Tower, and Courtyard; Rectory renovations; and multiple improvements at the Sacred Heart Center, including additional parking, repaired windows and doors, air conditioning unit, and other essential repairs. Projected Cost: \$1,416,000

### Priority II – School and Campus Repairs

Replacement of the aging school roof and masonry repairs to the Sacred Heart Center. Projected Cost: \$683,000

### Priority III – Long-Term Needs at the Sacred Heart Center

Updating first-floor restrooms, refinishing flooring, replacing AC units, and installing remaining gutters. Projected Cost: \$390,000

## 5. What is the total cost of all projects?

The combined cost of all three priorities is \$2,489,000.

## 6. Why is the campaign goal higher than the project total?

In addition to project costs, the campaign goal includes:

- Professional campaign services through Grace Philanthropy
- The establishment of a parish maintenance fund to protect our facilities long-term

This brings the total campaign goal to \$2,866,000.



## 7. Will all projects move forward immediately?

As God blesses our parish with the ability to raise the full amount, we will move forward with the entire project list. If funds fall short, projects will be prioritized based on urgency and impact. Projects will be scheduled as funds are received in order of urgency.

## 8. How does this campaign support our parish mission?

These improvements will enhance our worship experience, strengthen ministries and faith formation, support evangelization efforts, and ensure that Nativity BVM Cathedral remains a welcoming spiritual home for generations to come.

## 9. How can I give to the campaign?

### A. Make a Five-Year Pledge

Most parishioners choose to make a pledge payable over **five years** because it allows them to make a more meaningful gift at a pace that fits comfortably within their family budget. Spreading a commitment over several years often turns what might feel like a large amount into manageable monthly or annual installments. This extended timeframe also gives families the flexibility to plan their giving around income cycles, financial responsibilities, and long-term goals.

A five-year pledge period strengthens the parish as well. It provides a steady, predictable stream of support that allows Nativity BVM Cathedral to move forward confidently with major repairs and improvements. This stability helps the parish schedule construction, manage expenses responsibly, and complete projects without unnecessary delays.

While five years is the most common choice, every family is encouraged to select the timeframe that works best for their circumstances. Whether your pledge is fulfilled over one year, three years, or five years, your participation—at whatever level is right for you—helps preserve our sacred home for generations to come.

### B. Make a One-Time Gift

One-time gifts are welcome and appreciated. One time gifts early in the campaign allow us to address the most critical needs timely.

### C. Choose Your Payment Method

Cash or check

Automatic bank withdrawals (ACH)

Credit or debit card

Online giving

Bank bill-pay



## D. Choose Your Payment Schedule

You may fulfill your pledge on whatever schedule works best for your family. Many parishioners choose to give **monthly**, while others prefer **quarterly** or **annual** payments. Some families even select a custom schedule that aligns with their pay periods, budgeting habits, or seasonal income. The goal is to make your commitment as simple and sustainable as possible.

The parish does not require a specific payment frequency. Instead, we invite you to choose the rhythm that feels comfortable and realistic for your household. Whether your gift is spread out over many smaller payments or given in fewer larger installments, every contribution helps move our parish forward. What matters most is that your giving fits naturally into your family's financial life and allows you to participate joyfully and confidently in the campaign.

## E. Can I begin Payments Anytime

Families may begin their pledge payments at any time that works best for them. However, **if no start date is selected, pledges will automatically begin in September**. This timing helps the parish maintain administrative consistency, especially since many families prefer to align their giving with the start of the parish's fiscal planning cycle. Beginning most pledges at the same time also makes it easier for the parish office to manage records, send reminders, and track progress accurately throughout the five-year pledge period.

This default start date is simply a practical tool to keep the campaign organized. If September is not the right time for your family, you are welcome to choose a different month that better fits your circumstances. The parish is grateful for your generosity and wants your pledge to be manageable, intentional, and aligned with your family's needs.

## F. Give Through Stocks, Securities, or Retirement Assets

Yes. These types of gifts **may offer tax advantages** for some donors. Many parishioners find that giving through appreciated stocks, mutual funds, or retirement assets allows them to make a more significant gift at a lower after-tax cost. In some cases, donors may avoid capital gains taxes on appreciated assets or may be able to take advantage of charitable deductions, depending on their individual financial situation.

For those over age 70½, Qualified Charitable Distributions (QCDs) from an IRA can also be a tax-efficient way to support the campaign, as these gifts may count toward required minimum distributions without increasing taxable income.

Because every family's financial circumstances are unique, parishioners are encouraged to consult with their financial advisor or tax professional to determine what type of gift may be most beneficial. The parish office can provide transfer instructions and assist with the process.

Gifts of this kind not only support the long-term needs of Nativity BVM Cathedral—they often allow families to maximize their generosity in a way that is both meaningful and financially wise.



## G. Give Through a Donor-Advised Fund (DAF)

Yes. **DAF grants are welcome**, and many parishioners find this to be a simple and effective way to support the campaign. If you already have a Donor-Advised Fund through a financial institution or charitable foundation, you can recommend a grant directly to Nativity BVM Cathedral. For some families, this is one of the most convenient ways to make a meaningful gift, especially if they have already set aside charitable dollars in their fund.

Giving through a DAF can also be a strategic way to maximize generosity. Because the funds have already been designated for charitable purposes, recommending a grant allows you to support the campaign without affecting your current cash flow. Some donors also choose to make multi-year commitments by recommending annual grants from their DAF.

If you plan to give through a DAF, simply note it on your pledge card. The parish office can provide any information your fund administrator may need. Whether large or modest, DAF gifts play an important role in helping us preserve our sacred home and strengthen the mission of Nativity BVM Cathedral.

## H. Leave a Legacy Gift

Yes. **Bequests and beneficiary designations may be included in your pledge**, and they are a powerful way to leave a lasting legacy of faith. Many parishioners choose to support the campaign not only through their five-year pledge, but also by remembering Nativity BVM Cathedral in their will, trust, or retirement accounts. These planned gifts cost nothing today, yet they allow you to make a meaningful impact on the future of our parish.

A legacy gift can take many forms—such as naming the Cathedral as a beneficiary of a will, life insurance policy, retirement plan, or charitable trust. These gifts can be noted on your pledge card and counted toward the campaign, demonstrating your commitment to preserving our sacred home for generations to come.

Including the Cathedral in your estate plans is an act of faith and gratitude. It reflects your desire to ensure that the beauty, mission, and ministries of Nativity BVM continue long after your lifetime. Whether large or modest, every legacy gift strengthens the long-term stability of our parish and honors the sacrifices of those who built this community before us.

## I. Adjust Your Pledge if Needed

Yes. Pledges can be changed if circumstances change. A pledge is a **good-faith commitment**, not a legally binding contract. The parish understands that life can bring unexpected challenges, job changes, medical needs, family responsibilities, or financial shifts that no one can predict. If at any point during the five-year pledge period your situation changes, you may adjust your pledge amount, payment schedule, or timing without any embarrassment or pressure.

Your pledge is simply your intention based on what you believe you can do today. If you are later able to do more, you are welcome to increase your gift. If you need to reduce or pause your pledge, the parish will support you with understanding and gratitude for whatever you are able to offer.



# FAQS

The most important thing is that every family participates in a way that is **prayerful, responsible, and aligned with their circumstances**. Your commitment—whatever it may be—helps strengthen our parish and ensures that we move forward together as one community of faith.

## 10. How will I know about the progress of the campaign?

The parish will provide regular updates through:

- Weekend announcements
- Bulletin updates
- Parish website and email communications
- Campaign progress boards
- Reports from the Campaign Cabinet

## 11. How do we know the funds will be used as promised?

All campaign funds are **restricted exclusively** for the projects outlined in the “Preserving Our Sacred Home” Campaign. This means that every dollar raised can only be used for the designated renovations, repairs, and improvements—not for general parish operations or unrelated expenses. These restrictions ensure that your generosity directly supports the priorities identified through the Feasibility Study and parish planning process.

Oversight will be provided through multiple layers of accountability. The pastor, the parish finance committee, and the Campaign Cabinet will work together to monitor all campaign income and expenses, review progress, and ensure that funds are managed responsibly and transparently. Professional guidance from Grace Philanthropy Services adds an additional level of structure and best-practice stewardship.

To keep the parish fully informed, **regular financial updates** will be shared throughout the campaign. These updates will appear in the bulletin, on the parish website, at weekend Mass announcements, and through campaign progress reports. As projects begin and milestones are reached, the parish will receive clear, timely communication so that every family can see how their generosity is making a real and lasting impact.

This commitment to transparency ensures that parishioners can give with confidence, knowing that their gifts are being used faithfully, prudently, and exactly as intended.

## 12. What happens if the campaign exceeds its goal?

Any funds raised above the goal will be used to address additional facility needs that develop over the five years of the campaign, or strengthen the parish maintenance fund, ensuring long-term care of our campus.

## 13. What happens if the campaign falls short?

Projects will be prioritized based on urgency and impact. The parish will move forward responsibly, addressing the most critical needs first.



## 14. Are campaign funds separate from regular parish giving?

Yes. Campaign gifts are **above and beyond** regular offertory giving, which supports the daily operations of the parish—everything from utilities and insurance to ministries, salaries, and the ongoing life of the Cathedral. The offertory is the financial foundation that keeps our parish running week after week.

If your family can only do one, **please continue to support the offertory first**. The offertory is essential to sustaining our worship, ministries, and outreach. The capital campaign is a **special, one-time effort** focused on long-term improvements and major repairs that cannot be funded through the regular budget.

Campaign gifts are invited only after prayerful discernment and only if they are possible **in addition to** your regular support of the parish. Every family's situation is different, and we want parishioners to participate in a way that is responsible, meaningful, and aligned with their circumstances. By keeping offertory giving strong and treating campaign gifts as a separate act of generosity, we ensure that Nativity BVM Cathedral remains both **spiritually vibrant today** and **structurally strong for the future**.

## 15. Will any of this money go to the Diocese?

No. All funds raised stay at Nativity BVM Cathedral and are used exclusively for the projects outlined in the campaign. In addition, the diocese of Biloxi is giving to the campaign and supporting the fundraising efforts.

## 16. Is every family expected to give?

Every family in our parish is warmly invited to participate in the “Preserving Our Sacred Home” Capital Campaign. What matters most is **participation**, not equal giving. A successful campaign is built on the shared commitment of many, not the capacity of a few. Each household is asked to prayerfully consider a gift that is **meaningful and sacrificial for their circumstances**, recognizing that every family's situation is different.

No two gifts will look the same—and they don't need to. Some families may be able to make a larger pledge over time, while others may offer a modest gift or choose to support the campaign through prayer and volunteer service. What unites us is not the size of the gift, but the **spirit of generosity and love for our Cathedral**. When every family participates according to their means, the entire parish community moves forward together. Every gift—large or small—truly makes a difference and brings us closer to preserving our sacred home for generations to come.

## 17. What if I cannot give right now?

You may still participate by praying for the campaign, volunteering, or offering support in other ways. No family should feel pressured.



## **18. Can I volunteer instead of giving financially?**

Yes. Volunteers are essential to the success of the campaign. Opportunities include hospitality, communications, outreach, prayer team, and administrative support.

## **19. When will construction begin?**

Construction timelines depend on funds raised and contractor availability. The parish will communicate timelines as soon as they are finalized.

## **20. Will Masses or parish activities be disrupted?**

Every effort will be made to minimize disruption. If temporary adjustments are needed, the parish will communicate them clearly and well in advance.

## **21. Why were these projects chosen over others?**

These priorities address the most urgent facility needs identified through the Feasibility Study, parish leadership, and professional assessments. Over several months, parish members in the construction industry evaluated the condition of our buildings, and identified areas where delayed repairs could lead to more serious and costly problems in the future. Parish leadership—including the pastor, staff, and key ministry representatives—also provided insight into how our facilities are used daily and where improvements would most benefit parish life, ministry growth, and long-term sustainability.

The Feasibility Study confirmed that parishioners share these concerns and strongly support addressing these needs now. Together, these sources created a clear picture of what must be done first to protect our sacred spaces, ensure safety, and maintain the beauty and functionality of our campus. While there are always more projects we hope to address in the future, these priorities represent the most responsible and mission-critical investments for our parish at this time.

## **22. Who is overseeing the campaign?**

The campaign is led by Fr. Godfrey, the Campaign Cabinet, and Grace Philanthropy Services. Together they provide oversight, guidance, and accountability.

## **23. Will there be financial reporting during and after the campaign?**

Yes. The parish will provide regular updates on funds raised, expenses, and project progress.

## **24. Why are school and Sacred Heart Center projects included?**

These facilities serve the entire parish community and support ministries, formation, outreach, and parish life. Their upkeep is essential to the mission of Nativity BVM Cathedral. The Sacred Heart Center hosts countless parish gatherings, faith formation programs, community events, and outreach efforts that strengthen our life together as a parish family. It is a hub of activity throughout the week—used by children, youth, adults, and seniors alike—and plays a vital role in forming disciples and building community.



# FAQS

Likewise, the school is an extension of the Cathedral's mission, providing a Christ-centered education and shaping the next generation of Catholic leaders. Ensuring that the school building remains safe, functional, and welcoming is part of our responsibility to the families who entrust their children to us and to the broader mission of evangelization.

By caring for these spaces now, we protect the ministries that flow from them, support the families who rely on them, and strengthen the parish's ability to serve the people of God for decades to come. These improvements are not separate from our mission—they are essential to it.

## **25. How does this campaign strengthen our parish's spiritual mission?**

By preserving sacred spaces, improving facilities for ministry, and ensuring long-term sustainability, the campaign strengthens our ability to worship, evangelize, and serve the people of God. Our Cathedral is more than a building—it is the spiritual heart of our community, the place where we encounter Christ in the Eucharist, celebrate the sacraments, and gather as a family of faith. When we care for this sacred home, we honor the generations who built it, support the people who rely on it today, and prepare the way for those who will come after us.

Improved facilities allow our ministries to flourish, provide safe and welcoming spaces for formation, and create an environment where families can grow in faith. Strengthening our campus also enhances our ability to reach out to those in need, host community events, and offer hospitality to visitors and newcomers. By investing in the long-term health of our parish buildings, we ensure that Nativity BVM Cathedral remains a vibrant center of worship, discipleship, and service for decades to come.

This campaign is not simply about construction—it is about mission. It is about creating the conditions that allow our parish to live the Gospel more fully and to continue forming disciples who bring Christ's love into the world.

## **26. Who can I contact for more information?**

Please reach out to any member of the Capital Campaign Cabinet leadership, or contact Fr. Godfrey.

### **Leadership Committee:**

Fr. Godfrey — 228-374-1717

Jim Compton — 601-270-5141

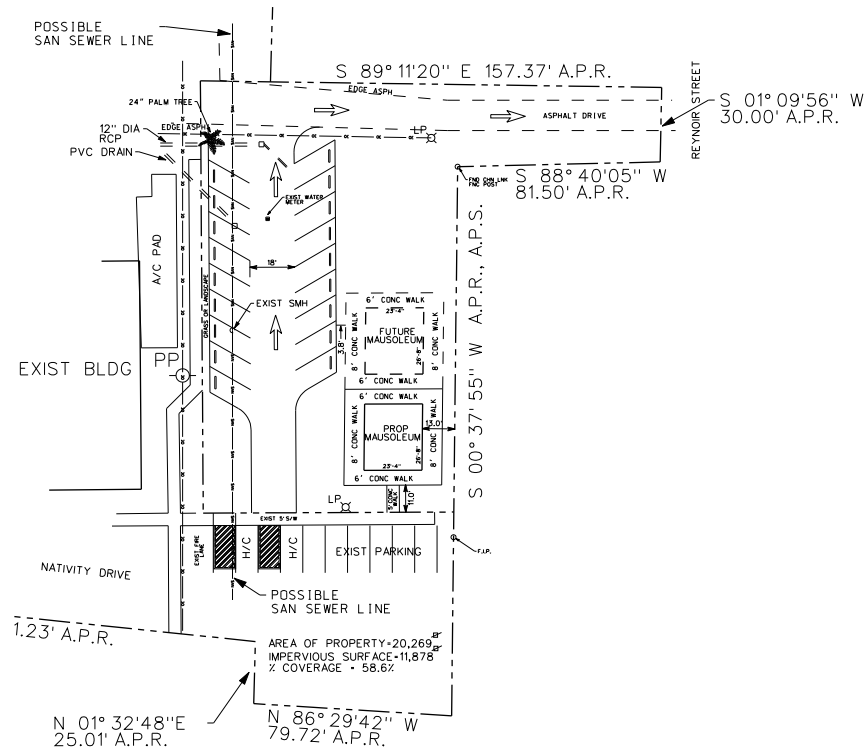
Gregg Nordstrom — 228-861-3927

Mike Bruffey — 228-282-5327



# FAQS

Here are some samples of the maintenance or improvements that will be addressed as part of the campaign needs of the parish.



Cathedral Ceiling damage #1



Cathedral Ceiling damage #2



# FAQS



Cathedral ceiling leak below bell tower



Rectory Soffit #1



Rectory Soffit #2



# FAQS



SHC Masonry #1



SHC Masonry #2



Courtyard Masonry



Rectory Masonry



Missing bell tower louvers



# FAQS



SHC door #1



SHC door #2



SHC floor damage



Ceiling leak

